





THESE PLANS AND SPECIFICATIONS ARE THE PROPERTY OF CIVIL SOLUTIONS GROUP, INC. AN SHALL NOT BE PHOTOCOPIED, RE-DRAWN, OR USED ON ANY OTHER PROJECT OTHER THAN THE PROJECT SPECIFICALLY DESIGNED FOR, WITHOUT WRITTEN PERMISSION. THE OWNERS AND ENGINEERS OF CIVIL SOLUTIONS GROUP, INC. DISCLAIM ANY LIABILITY FOR ANY CHANGES OR MODIFICATIONS MADE TO THESE PLANS OR THE DESIGN THEREON WITHOUT THEIR CONSENT. THESE PLANS ARE DRAWN TO SCALE WHEN PLOTTED ON A 11" x 17" SHEET OF PAPER. THESE PLANS ARE PRODUCED IN COLOR AND SHOULD BE PLOTTED AS SUCH.



PROVO BAY (EL=4495)

APPROX. MILLRACE
HEADWATERS

UNIVERSITY AVE.

I-15

DETENTION TRIBUTARY BASIN
43.34 ACRE

EXISTING DETENTION BASIN AND
MITIGATION SITE
Q100 (INFLOW): 103 CFS

EXISTING LIFT STATION

I-15

MILL RACE

1860 SOUTH

EAST BAY
GOLF COURSE

POTENTIAL COMPENSATORY
MITIGATION SITE

FOOTHILLS

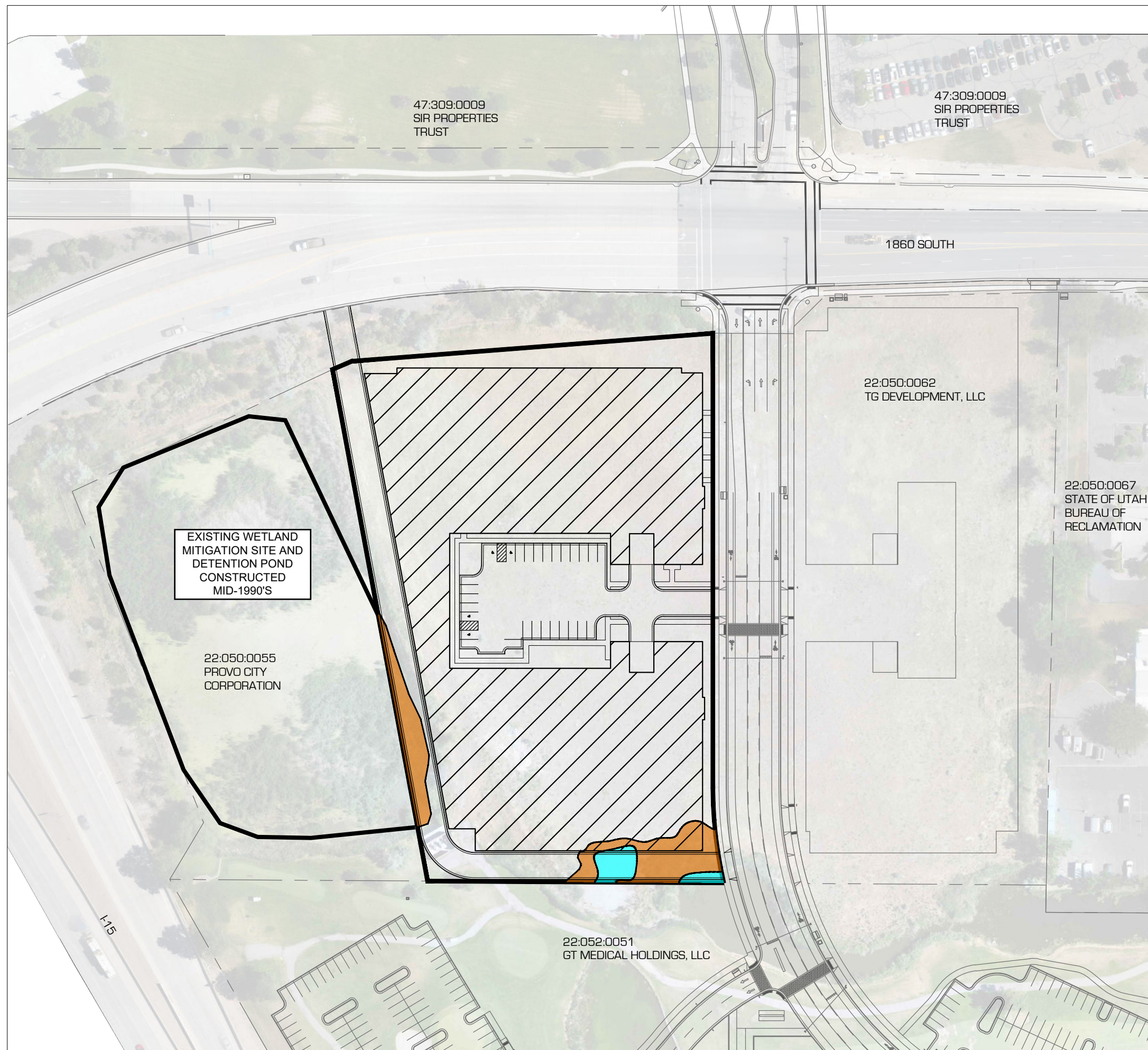


THESE PLANS AND SPECIFICATIONS ARE THE PROPERTY OF CIVIL SOLUTIONS GROUP, INC. AN SHALL NOT BE PHOTOCOPIED, RE-DRAWN, OR USED ON ANY OTHER PROJECT OTHER THAN THE PROJECT SPECIFICALLY DESIGNED FOR, WITHOUT WRITTEN PERMISSION. THE OWNERS AND ENGINEERS OF CIVIL SOLUTIONS GROUP, INC. DISCLAIM ANY LIABILITY FOR ANY CHANGES OR MODIFICATIONS MADE TO THESE PLANS OR THE DESIGN THEREON WITHOUT THEIR CONSENT. THESE PLANS ARE DRAWN TO SCALE WHEN PLOTTED ON A 11" X 17" SHEET OF PAPER. THESE PLANS ARE PRODUCED IN COLOR AND SHOULD BE PLOTTED AS SUCH.

REGIONAL HYDROLOGY
EAST BAY
PROVO, UT 84601

MARK:	DATE:	DESCRIPTION:

PROJECT #: 18-361
DRAWN BY: A. OCHSENBEIN
PROJECT MANAGER: M. TAYLOR
ISSUED: 04.15.20

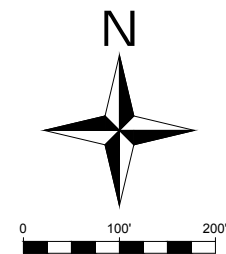


LEGEND

EXISTING WETLAND TO BE REMOVED
[7,941 SF]

OPEN WATER TO BE FILLED (BELOW OHWM)
[1,661 SF]

PROPOSED PARKING = 259 STALLS



THESE PLANS AND SPECIFICATIONS ARE THE PROPERTY OF CIVIL SOLUTIONS GROUP, INC. AND SHALL NOT BE PHOTOCOPIED, RE-DRAWN, OR USED ON ANY OTHER PROJECT OTHER THAN THE PROJECT SPECIFICALLY DESIGNED FOR, WITHOUT WRITTEN PERMISSION. THE ENGINEERS AND ENGINEERS OF CIVIL SOLUTIONS GROUP SHALL DISCLAIM ANY LIABILITY FOR ANY CHANGES OR MODIFICATIONS MADE TO THESE PLANS OR THE DESIGN THEREON WITHOUT THEIR CONSENT. THESE PLANS ARE DRAWN TO SCALE WHEN PLOTTED ON A 11" X 17" SHEET OF PAPER. THESE PLANS ARE PRODUCED IN COLOR AND SHOULD BE PLOTTED AS SUCH.

civilsolutionsgroup.na



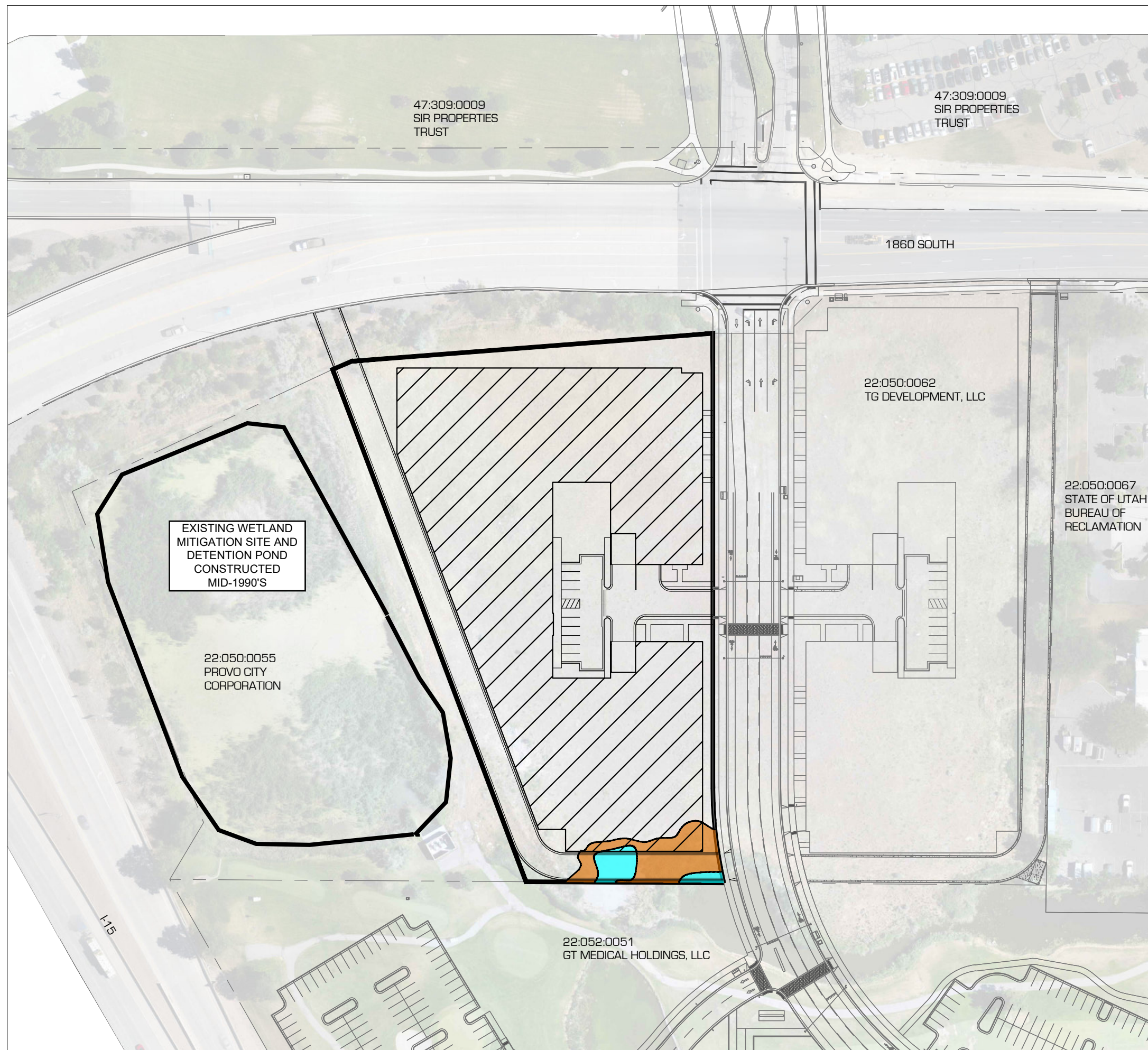
ALTERNATIVE 1: MINIMIZATION ALTERNATIVE
EAST BAY
PROVO, UT 84601

[illegible]

PROJECT #: 18-361
DRAWN BY: A. OCHSENBEIN
PROJECT MANAGER: M. TAYLOR
ISSUED: 04.16.20

ALTERNATIVE
1

FIGURE 6

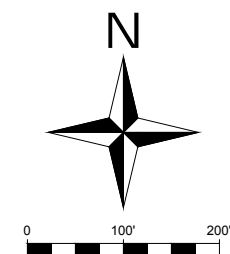


LEGEND

EXISTING WETLAND TO BE REMOVED
[4,690 SF]

OPEN WATER TO BE FILLED (BELOW OHWM)
[1,661 SF]

PROPOSED PARKING = 213 STALLS



THESE PLANS AND SPECIFICATIONS ARE THE PROPERTY OF CIVIL SOLUTIONS GROUP, INC. AN SHALL NOT BE PHOTOCOPIED, RE-DRAWN, OR USED ON ANY OTHER PROJECT OTHER THAN THE PROJECT SPECIFICALLY DESIGNED FOR, WITHOUT WRITTEN PERMISSION. THE OWNERS AND ENGINEER OF CIVIL SOLUTIONS GROUP, INC. DISCLAIM ANY LIABILITY FOR ANY CHANGES OR MODIFICATIONS MADE TO THESE PLANS FOR THE DESIGN THEREOF WITHOUT THEIR CONSENT. THESE PLANS ARE DRAWN TO SCALE WHEN PLOTTED ON A 11" X 17" SHEET OF PAPER. THESE PLANS ARE PRODUCED IN COLOR AND SHOULD BE PLOTTED AS SUCH.



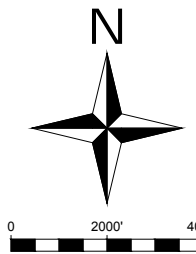
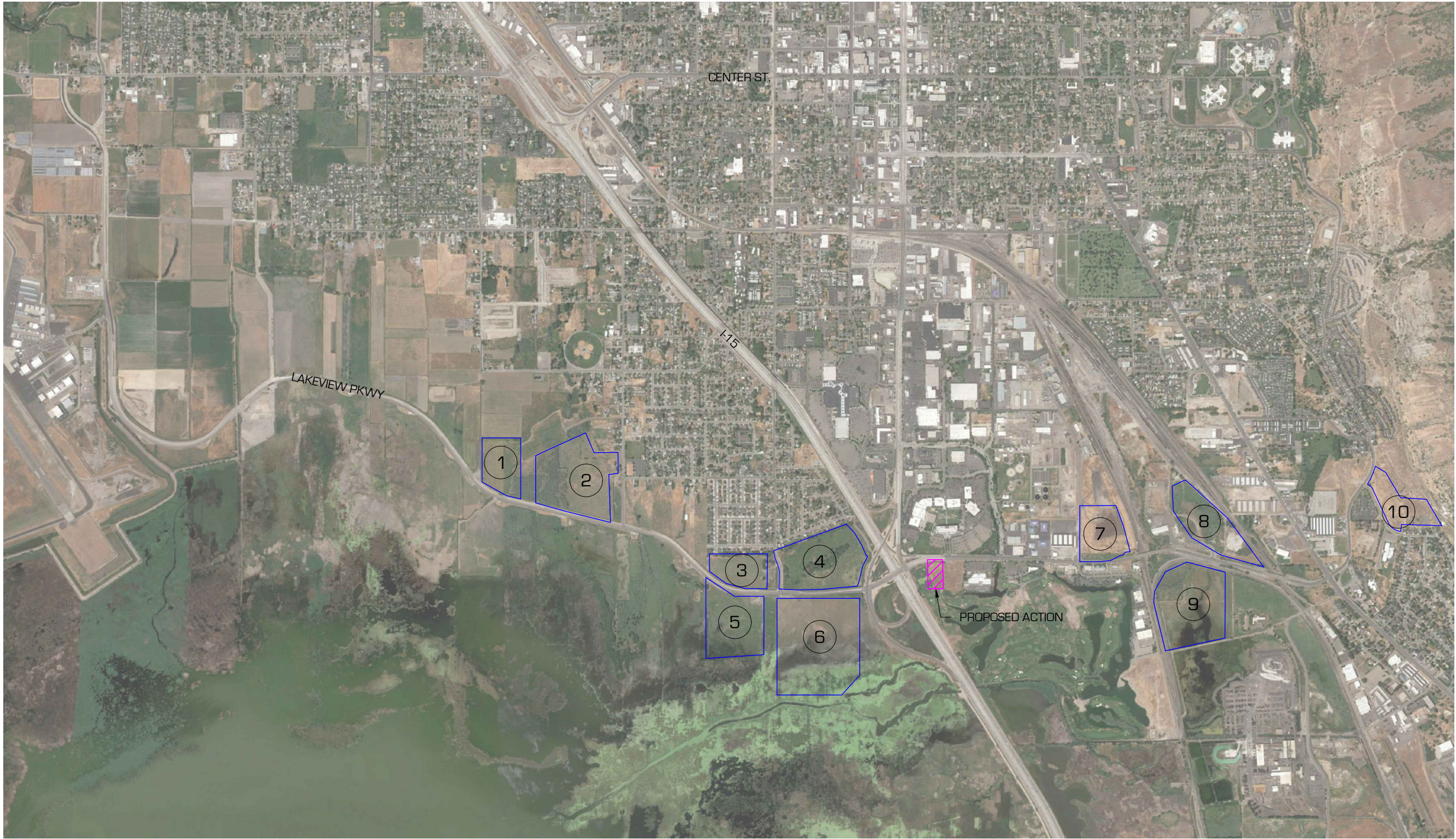
ALTERNATIVE 2: NEAR TOTAL AVOIDANCE
EAST BAY
PROVO, UT 84601

[illegible]

PROJECT #: 18-361
DRAWN BY: A. OCHSENBEIN
PROJECT MANAGER: M. TAYLOR
ISSUED: 04.16.20

ALTERNATIVE 2

FIGURE 7



THESE PLANS AND SPECIFICATIONS ARE THE PROPERTY OF CIVIL SOLUTIONS GROUP, INC. AN SHALL NOT BE PHOTOCOPIED, RE-DRAWN, OR USED ON ANY OTHER PROJECT OTHER THAN THE PROJECT SPECIFICALLY DESIGNED FOR, WITHOUT WRITTEN PERMISSION. THE OWNERS AND ENGINEERS OF CIVIL SOLUTIONS GROUP, INC. DISCLAIM ANY LIABILITY FOR ANY CHANGES OR MODIFICATIONS MADE TO THESE PLANS OR THE DESIGN THEREON WITHOUT THEIR CONSENT. THESE PLANS ARE DRAWN TO SCALE WHEN PLOTTED ON A 11" X 17" SHEET OF PAPER. THESE PLANS ARE PRODUCED IN COLOR AND SHOULD BE PLOTTED AS SUCH.

OFF-SITE ALTERNATIVES
EAST BAY
PROVO, UT 84601

MARK:	DATE:	DESCRIPTION:

PROJECT #: 18-361
DRAWN BY: A. OCHSENBEIN
PROJECT MANAGER: M. TAYLOR
ISSUED: 04.16.20

OFF-SITE
ALTERNATIVES
FIGURE 8